



Make a
Witch's
Hat
with me...

Cutters For Clay

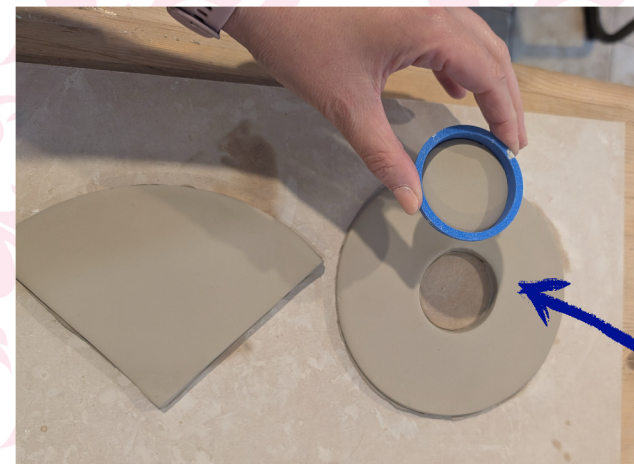
www.cuttersforclay.co.uk



1. Roll out your clay to 7mm thick. We've used our clay spacers to help!



2. If you want to texture your clay, do this now then cut out 1 circle and 1 cone piece



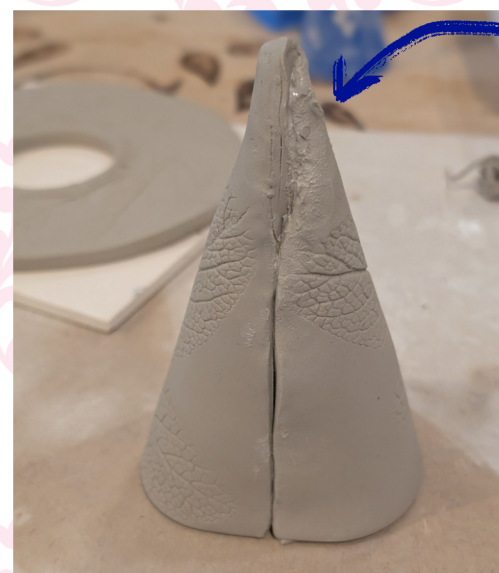
3. Cut a small circle from your base piece. We've used one of our small circle cutters. If you want your hat to be a lantern, make sure the hole is large enough to fit a t-light



4. Score the 2 straight edges of the cone piece and paint slip onto one edge



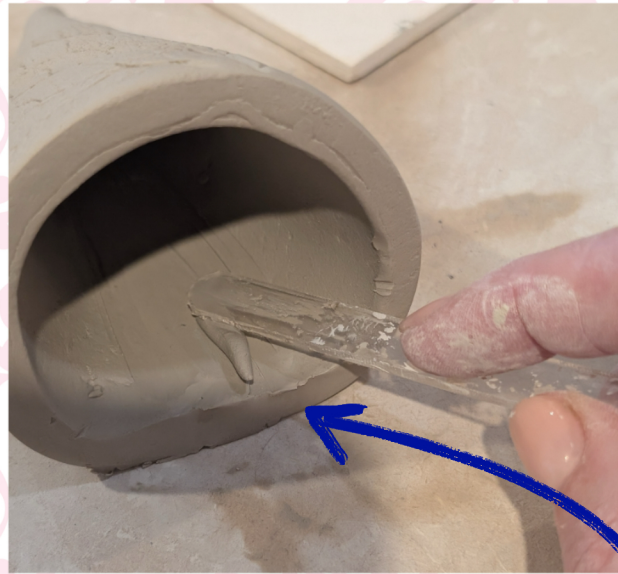
5. Roll the straight edges in towards each other to join



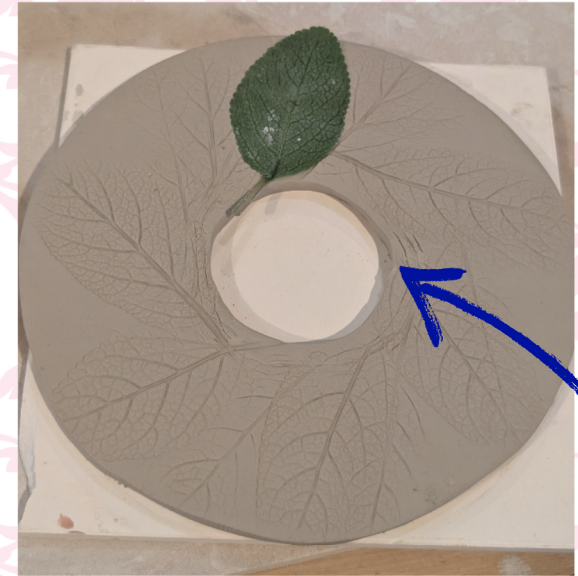
6. Continue all the way up the cone, gently firming the straight edges together



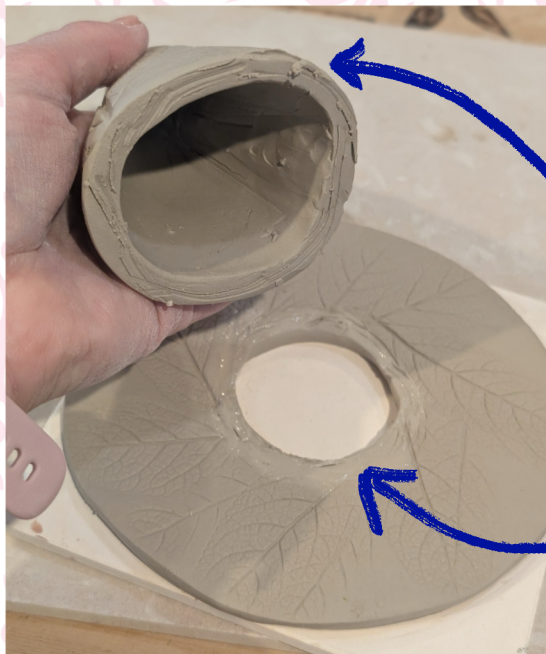
7. Add a thin sausage of clay to the seam line and blend to smooth the join



8. Tip the cone onto its side so that the seam line is flat on the table and blend a sausage of clay on the inside seam



9. Add texture to the base of your hat if you wish, get creative! Score around the smaller inner circle where you will attach the cone



10. Score the base of the cone. Paint slip onto where you have scored on your base piece



11. Firm the cone in place on the base of your hat. Shape the tip of your hat as you wish to add character



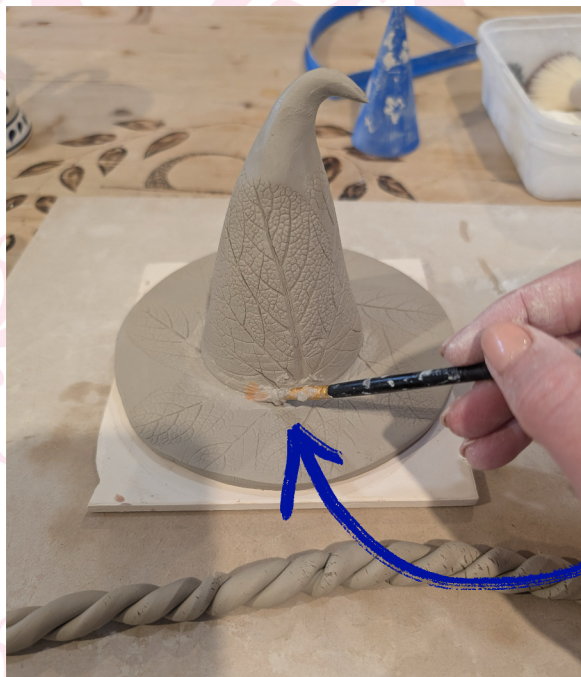
12. Roll out 2 long sausages of clay and lay them side by side



13. Roll your sausages of clay so that they twist together



14. Continue to twist all the way down until you get something like this



15. Paint slip around where your cone and hat base meet



16. Wrap the twisted sausages of clay around the base of the cone. Cut to size and smooth the join

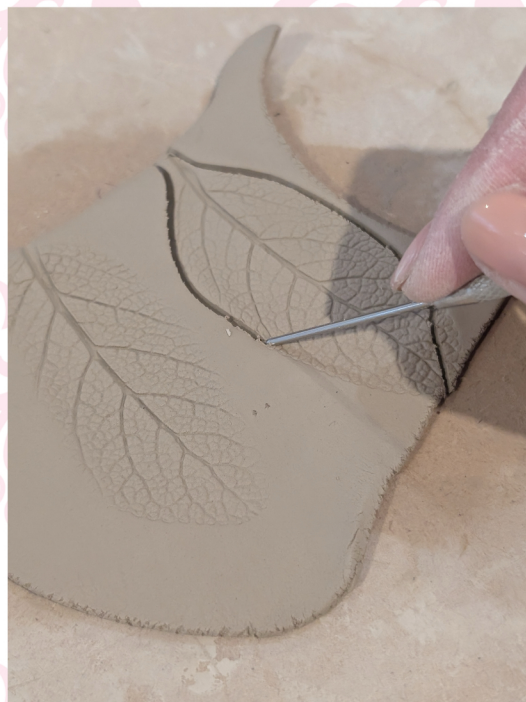


17. Use a damp paintbrush to smooth out your twisted rope of clay



18. Make whatever additional decoration you want for your witch's hat. Here we've stamped a leaf onto some spare clay...

19. ...then used a needle tool to cut out our leaves



20. All that's left to do is decorate and make it your own! Remember to score and slip everything that you attach to your witch's hat. Finally, fettle and leave to dry.
Ta-dah!



