

Make a Robin Pot with me...



Cutters For Clay

www.cuttersforclay.co.uk



1. Roll out your clay to 7mm thick, we've used our clay spacers to help

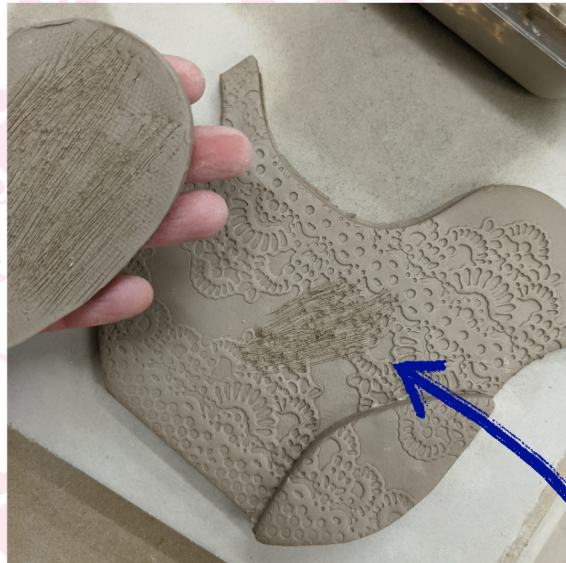


2. If you'd like to add texture to your clay, do this now

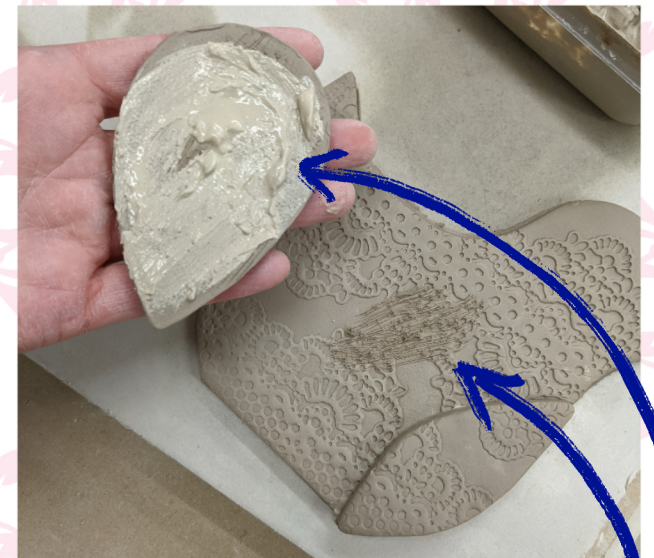
3. Cut out 1 base, 2 robin bodies, 2 wings and 2 breast pieces. Remember to flip over your textured clay so that you end up with a mirrored set of bodies, wings and breast pieces



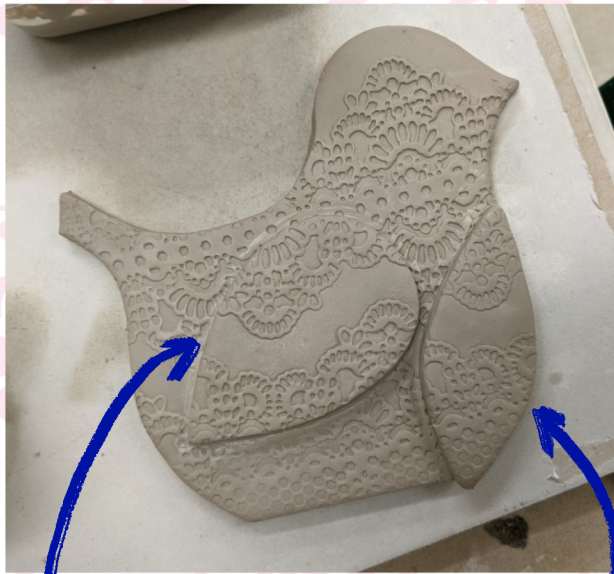
4. Smooth the edges of all your cut out pieces



5. Score the back of the wing and breast pieces and where you will attach them on the robin's body



6. Paint slip onto the scored areas



7. Attach the wing and breast pieces onto both body pieces



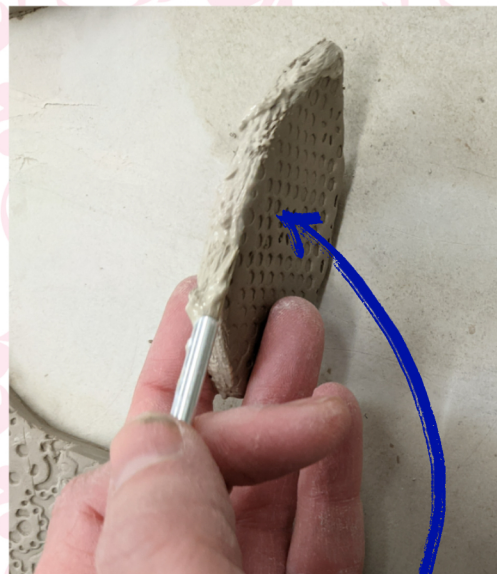
8. Make an indent, or add small balls of clay for the eyes



9. You should now have 2 bodies which are the mirror image of each other and 1 base piece

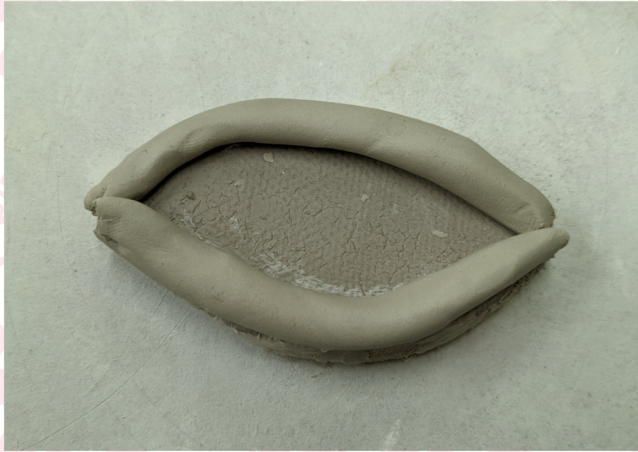


10. Score and slip around the edges of the base



11. Score and slip around the inside edge of the robin's body as shown. Make sure to leave the top edge





12. Place 2 sausages of clay on top of the base, around the edge



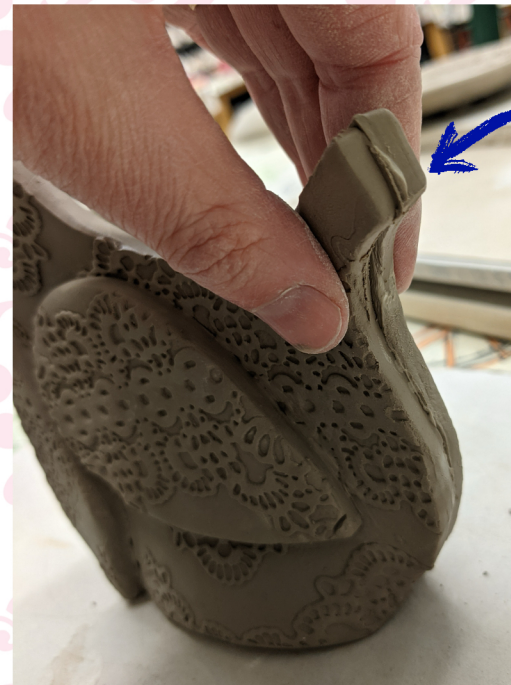
13. Smush the inside half of the sausage into the base



14. Blend this in to your base



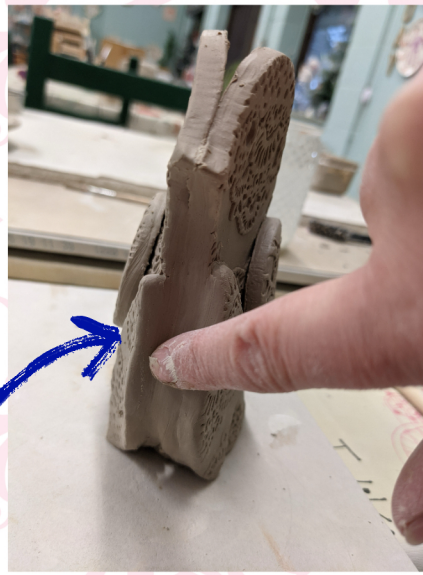
15. Stand up one of the robin body pieces and curve around one side of the base. Blend the rest of the sausage up into the robin's body



16. Line up the other side of the robin's body and press the tail together



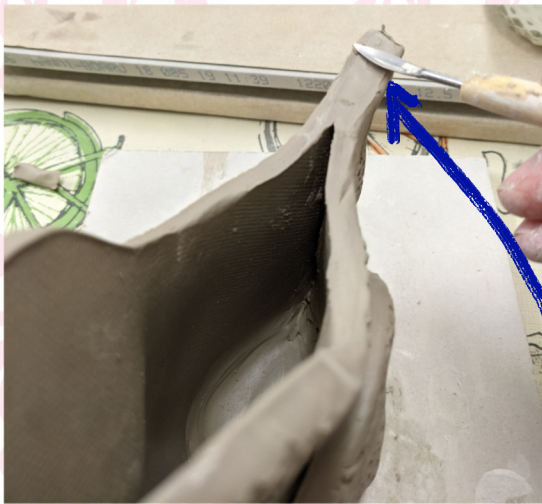
17. Repeat step 15 on the other side of the body carefully, finishing up from the top



18. Blend all the joins from the beak to the base and the tail to the base



19. Gently push the tail and the head towards each other to slightly open up the pot



20. Seal the top of the tail as shown



21. Neaten up the base and blend out the seam lines



22. Fettle with a damp paintbrush, then leave to dry slowly before firing...ta-dah!

