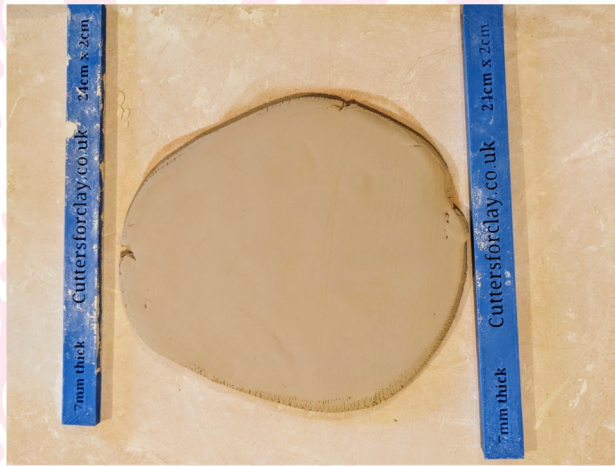


Make a Flower Dome with me...



Cutters For Clay

www.cuttersforclay.co.uk



1. Roll out your clay to 7mm thick



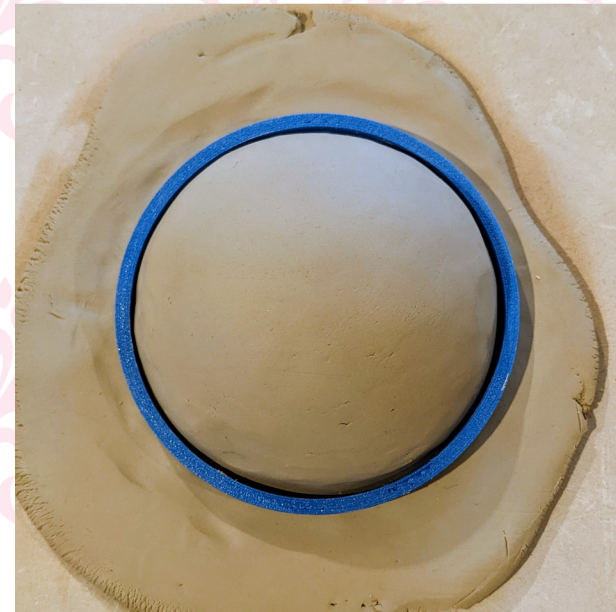
2. Powder your 11cm dome with talc or corn flour



3. Drape your clay over the dome



4. Firm the clay all around so it takes the shape of the dome



5. Place the cutter over the dome and cut the clay



6. Push the dome up through the cutter so that you get a nice neat edge



7. Tidy up the edge and give the dome a little twist to make sure it's not stuck to your clay



8. Decorate your dome... add bits on and cut bits away. Have fun and don't forget to score and slip any clay that you attach



9. Here's a few examples for inspiration...



